



**State League
3-Umpire
System**

**Field Umpire
Expectations**

Session Objectives

3-Umpire System Philosophy

Stoppage Positioning – where does each umpire set-up, watch and move when play re-commences

Running to Cover – what and why?

Teamwork – our team rule.

Session Outcomes

Understand the reasoning behind the State League 3-Umpire expectations.

Understand how the 3 field umpires set-up at stoppages and what their role is.

Understand why and when umpires run to cover.

Understand how the 3 umpires work together to get a team outcome.

Philosophy

Team first focus

Always umpiring

Helping our teammates

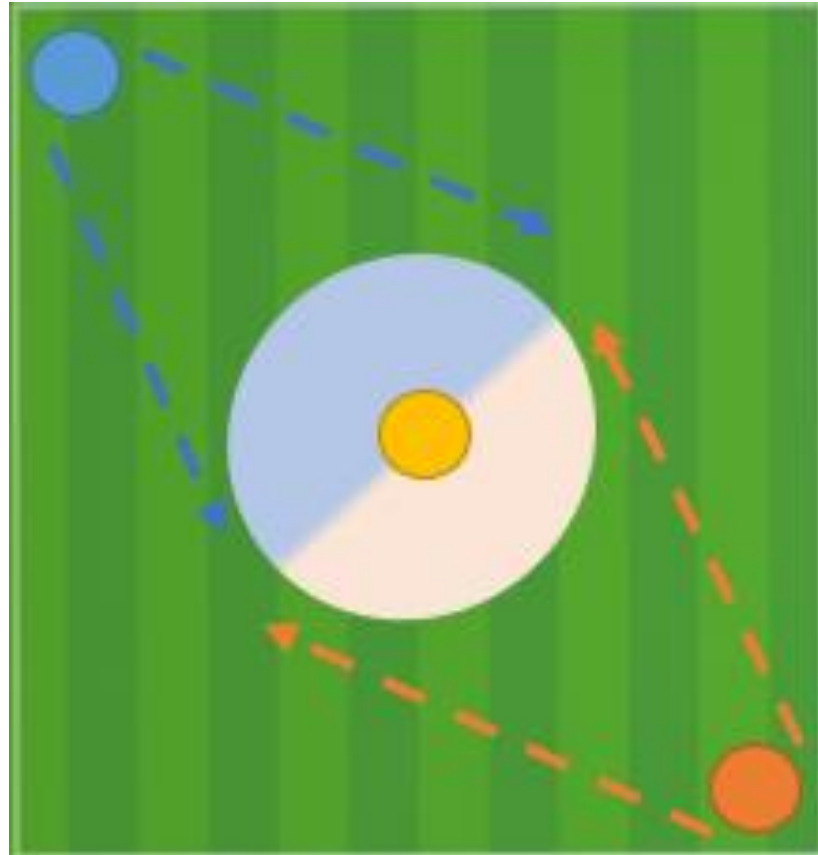
Maintaining quality of umpiring

Positive team outcomes for the game

Stoppage Positioning

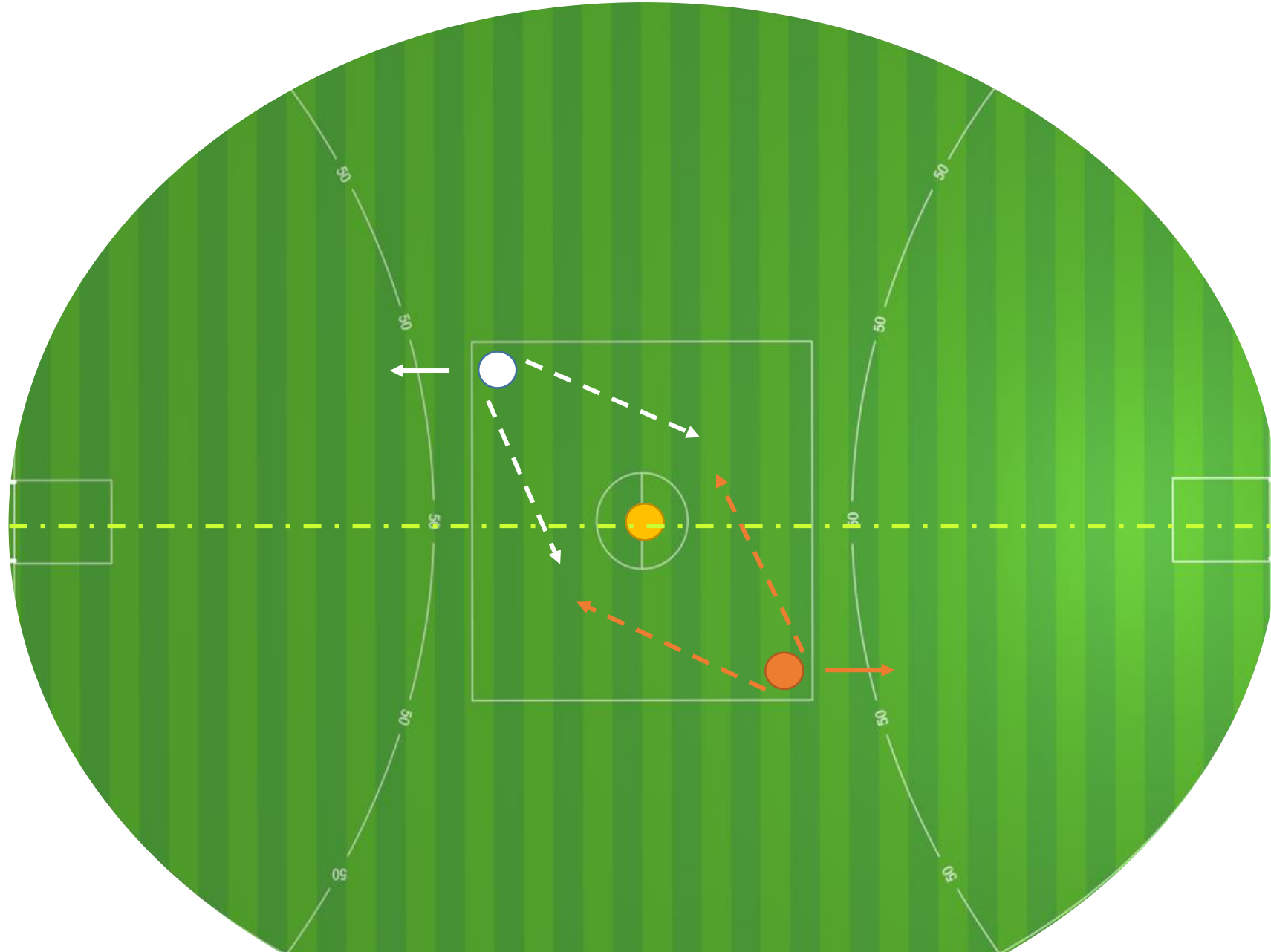
Position of Influence

3 Different Angles








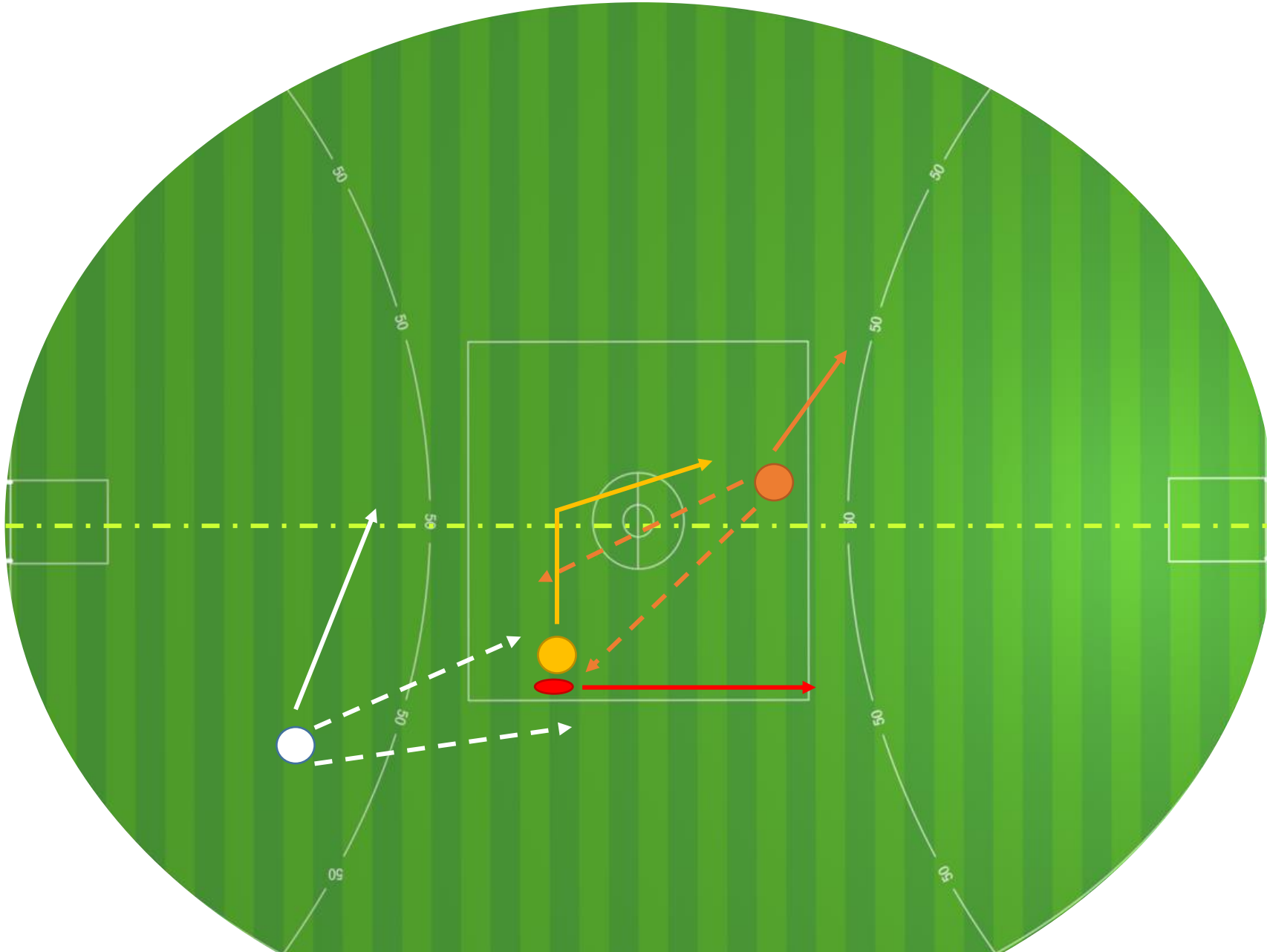
Know your role

MZ
EZ
FEZ



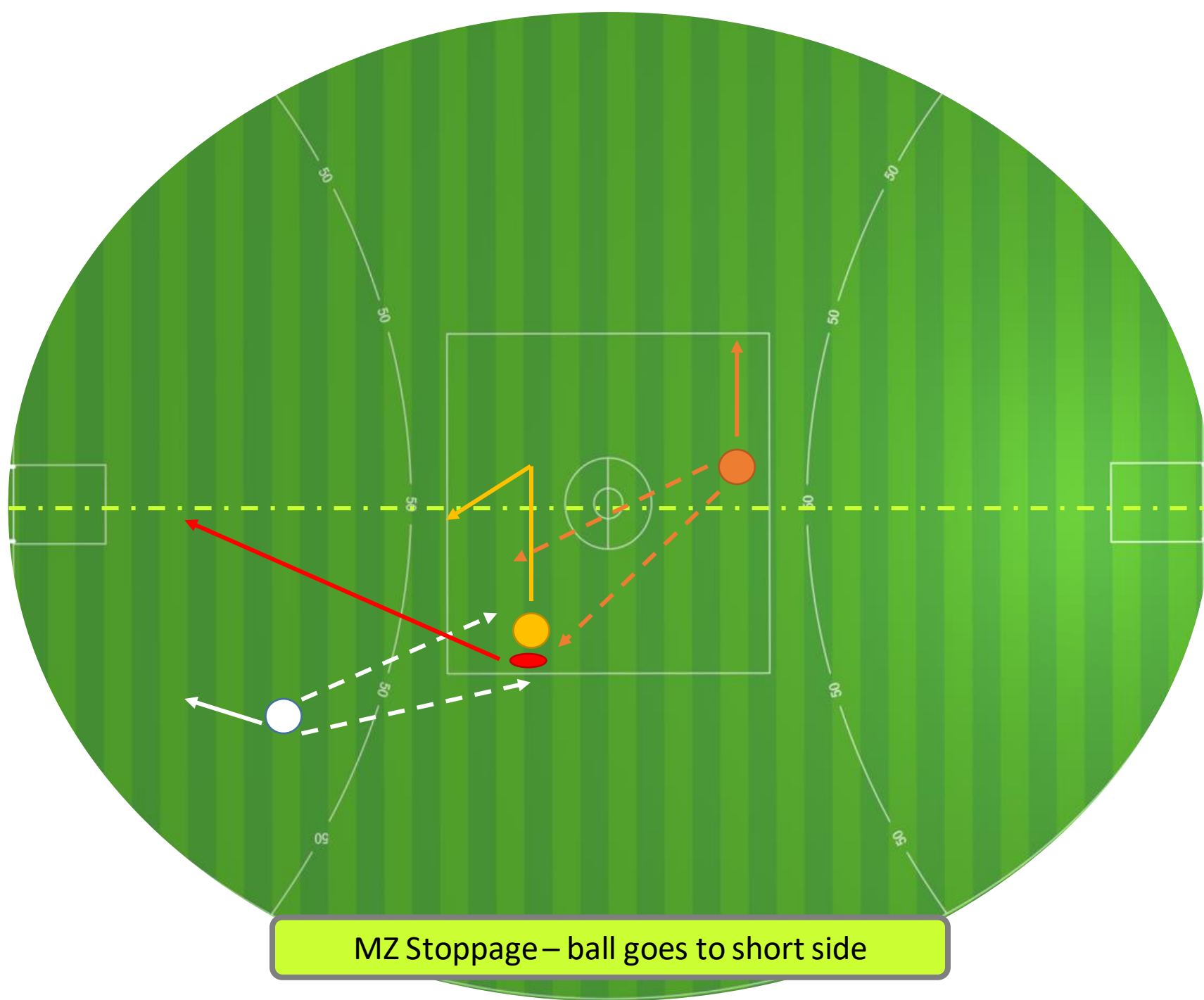
Start of game

-  MZ
-  EZ
-  FEZ
-  Movement
-  Vision

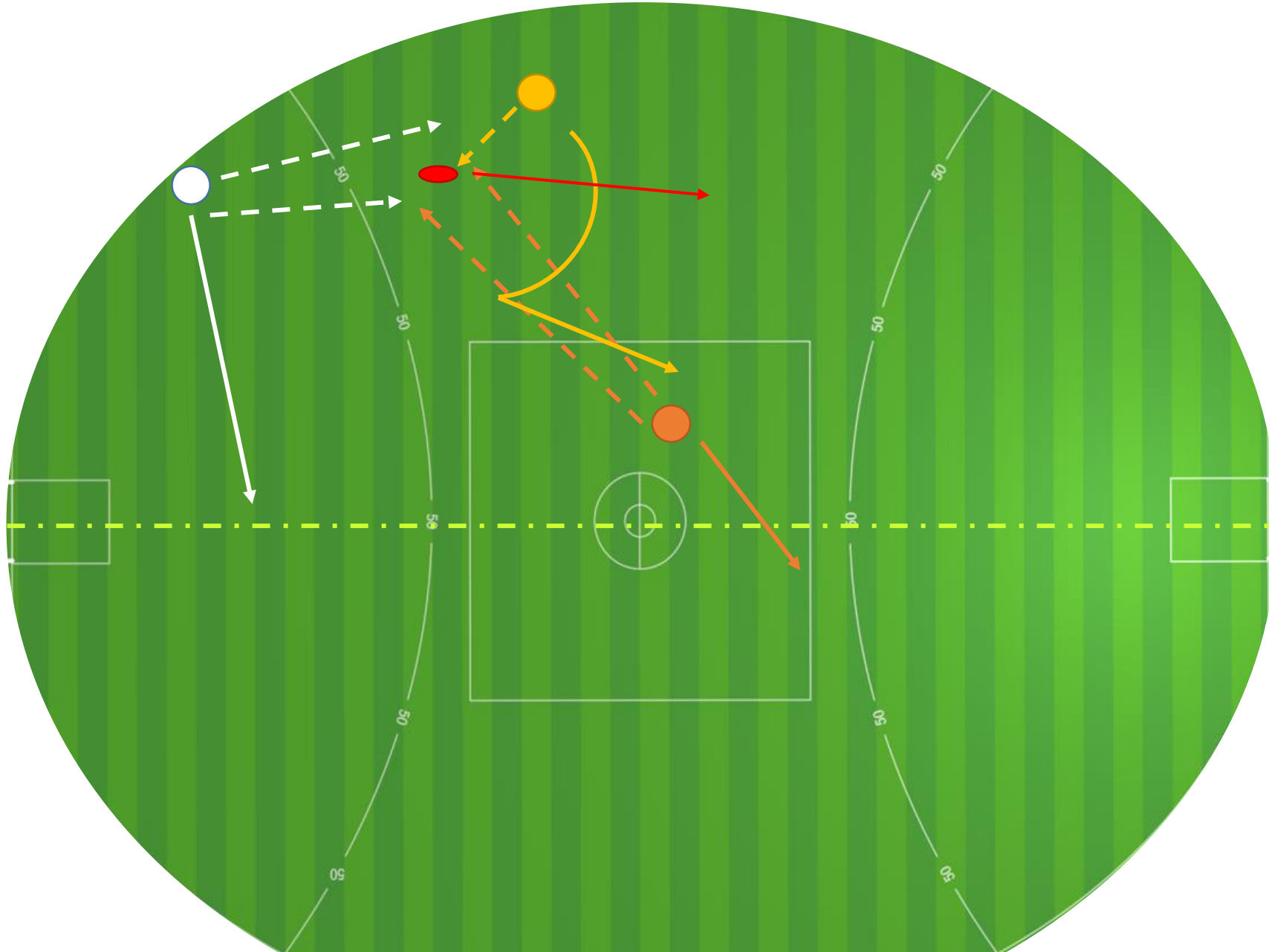


MZ Stoppage – ball goes to long side

- MZ
- EZ
- FEZ
- Movement
- Vision

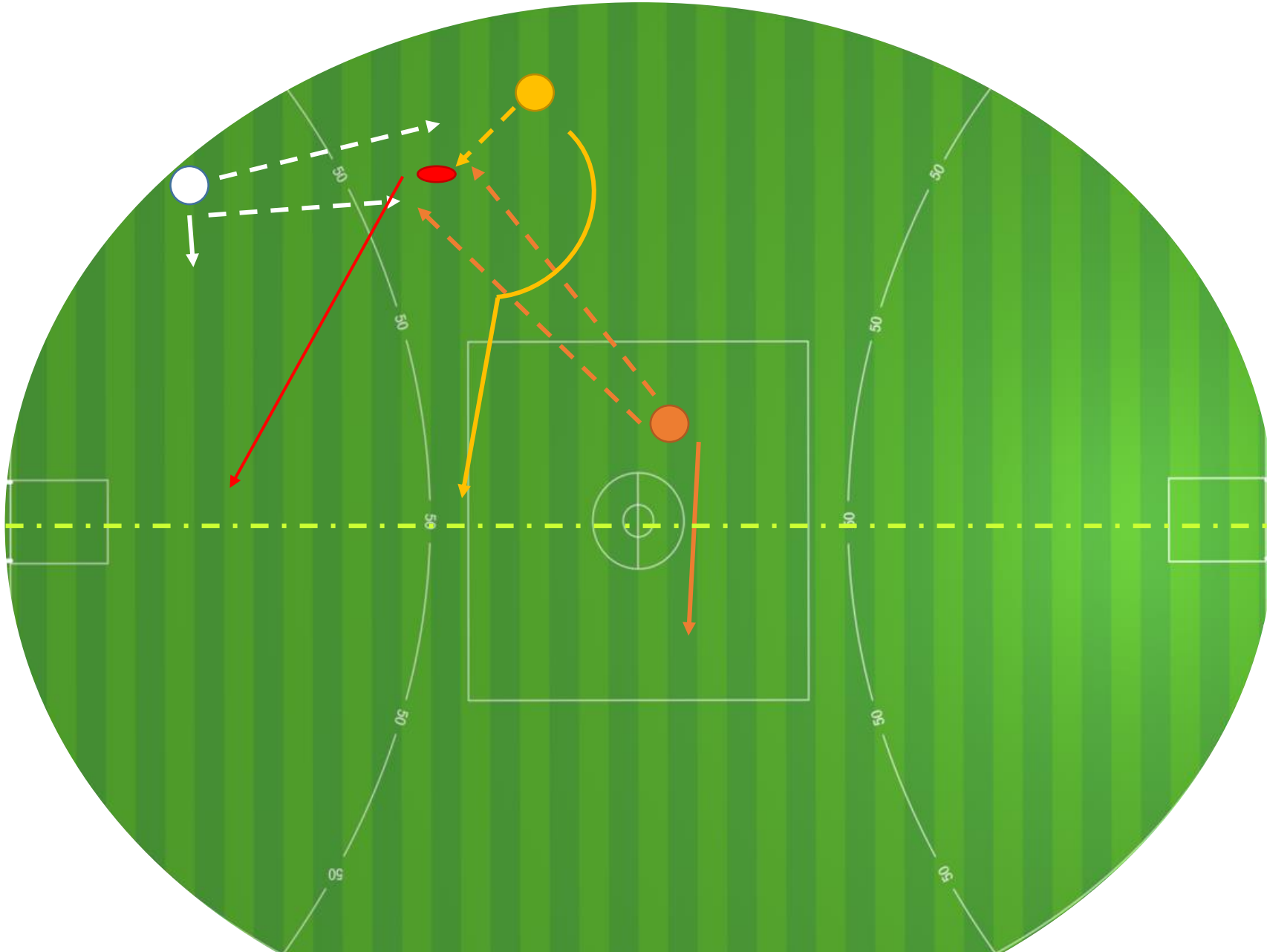


- MZ
- EZ
- FEZ
- Movement
- Vision



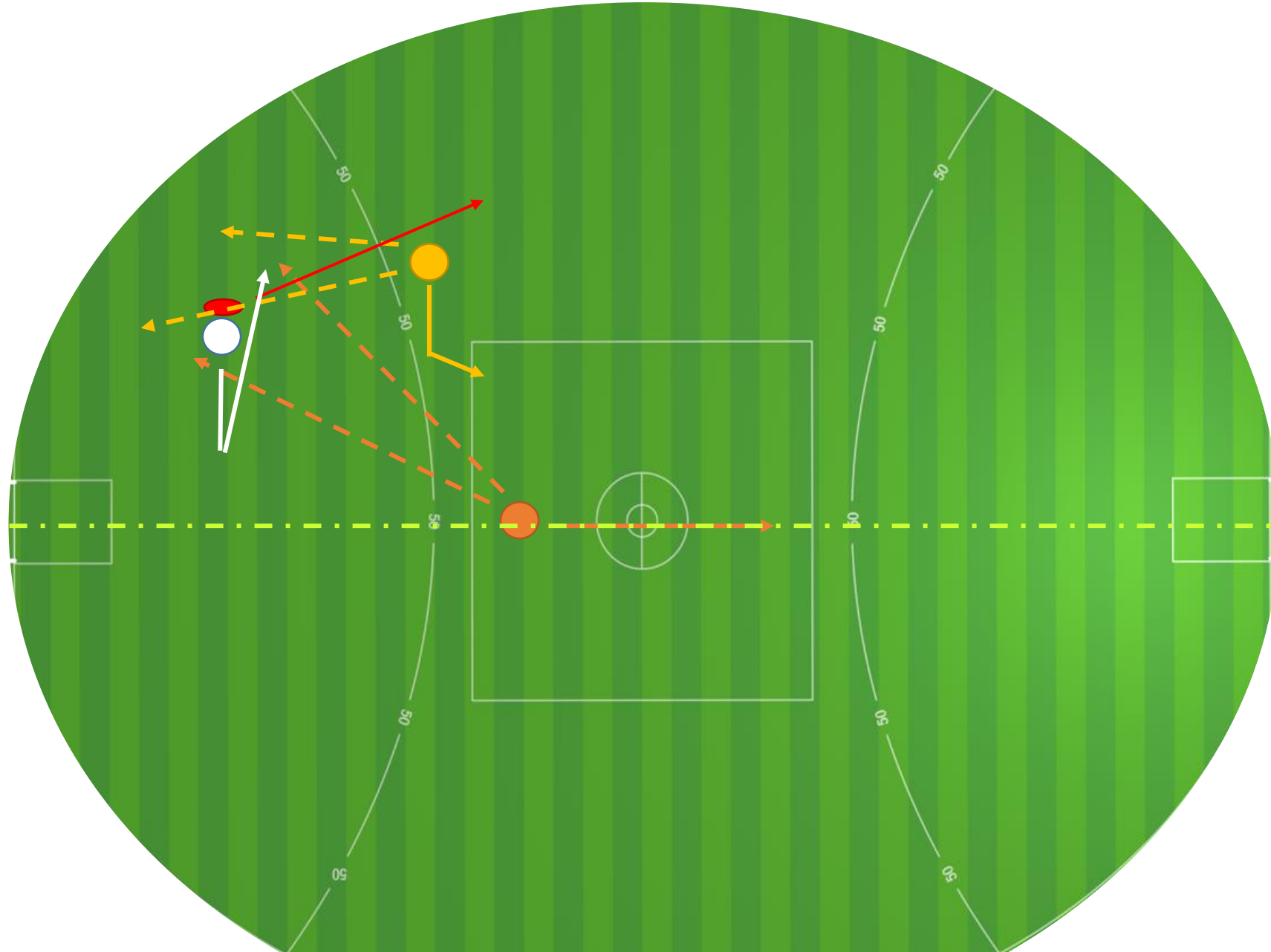
MZ Boundary Throw In – ball goes long side

- MZ
- EZ
- FEZ
- Movement
- Vision



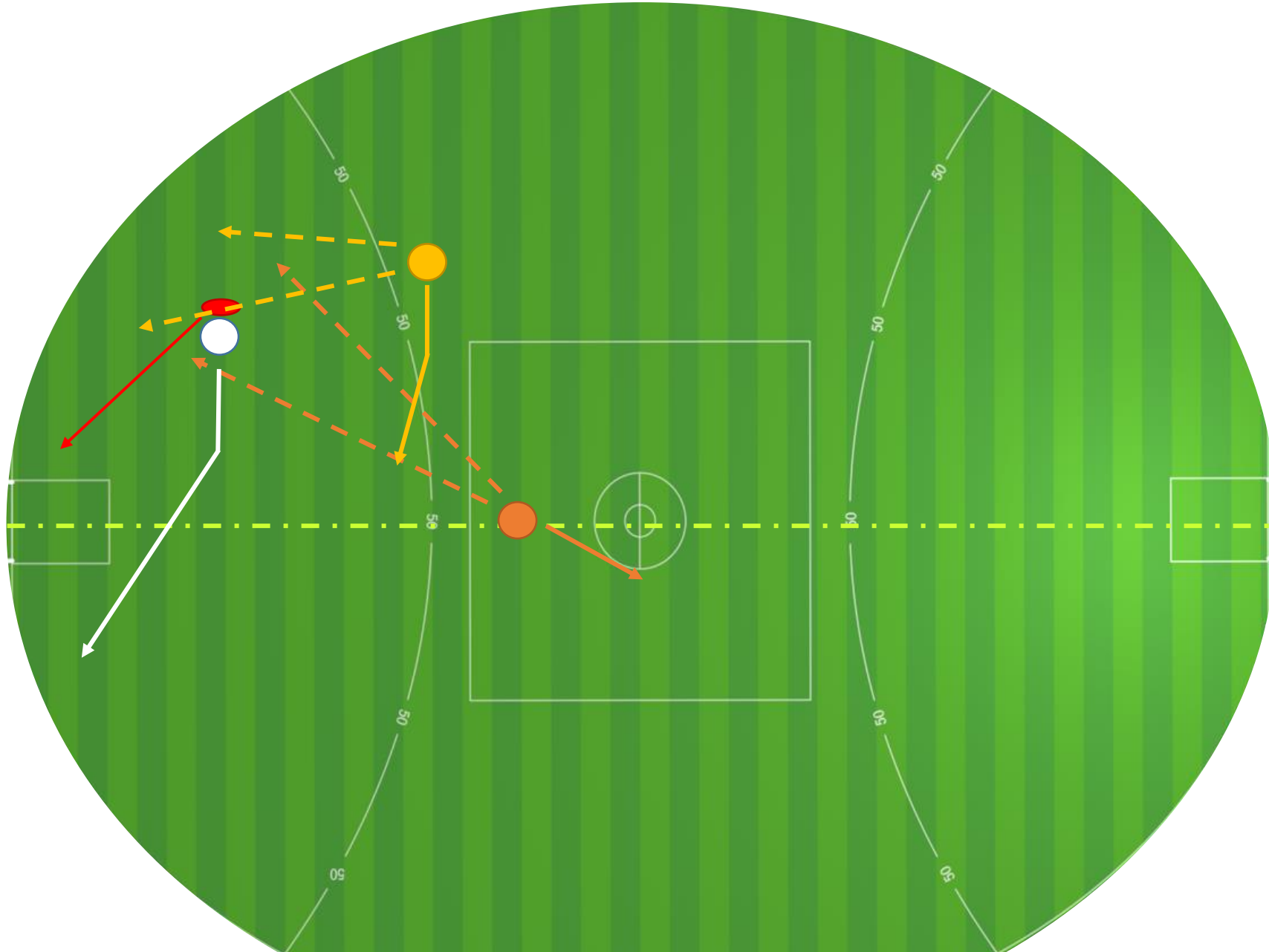
MZ Boundary Throw In – ball goes short side

- MZ
- EZ
- FEZ
- Movement
- Vision



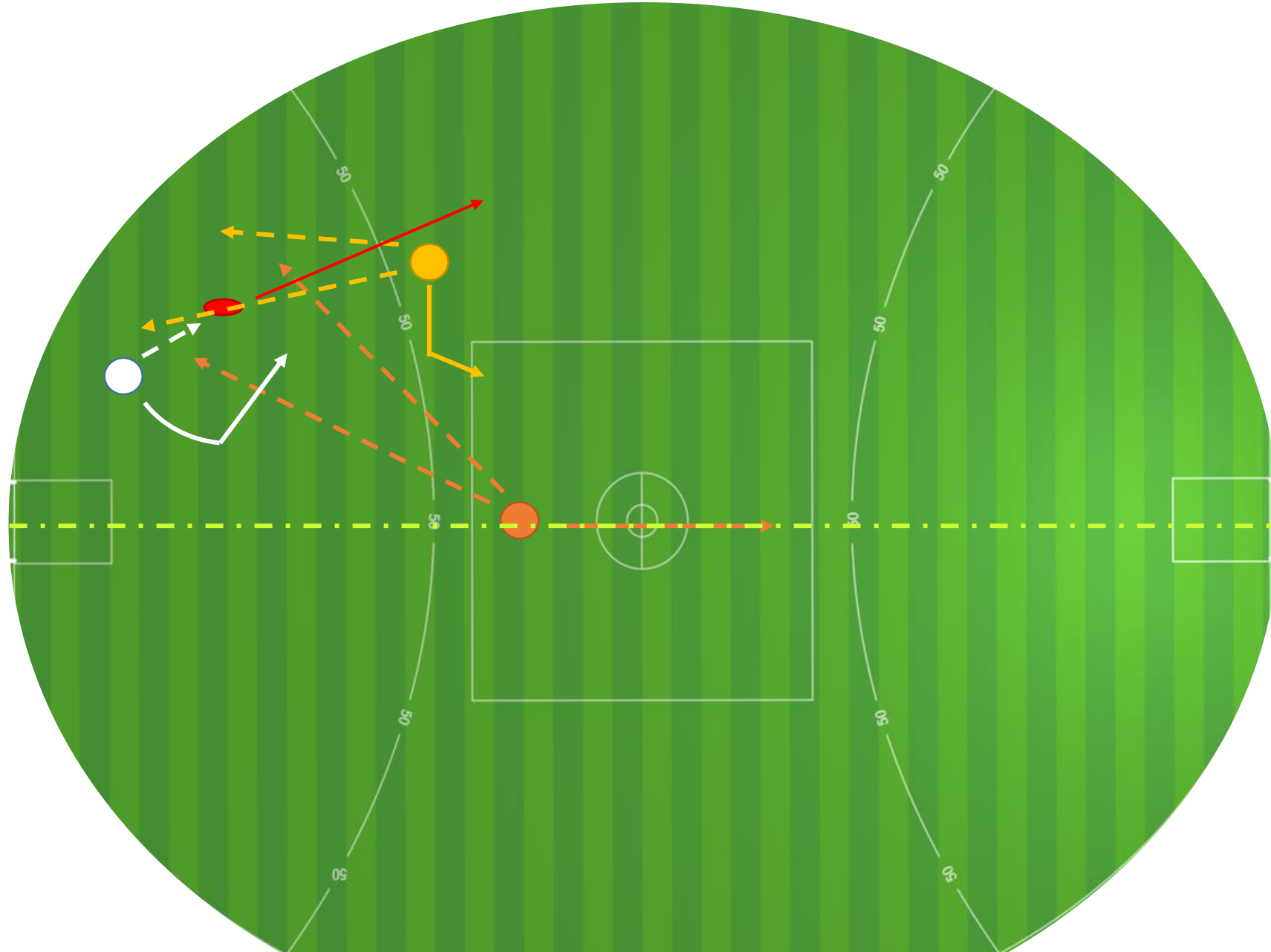
EZ Stoppage— ball leaves 50m

- MZ
- EZ
- FEZ
- Movement
- Vision



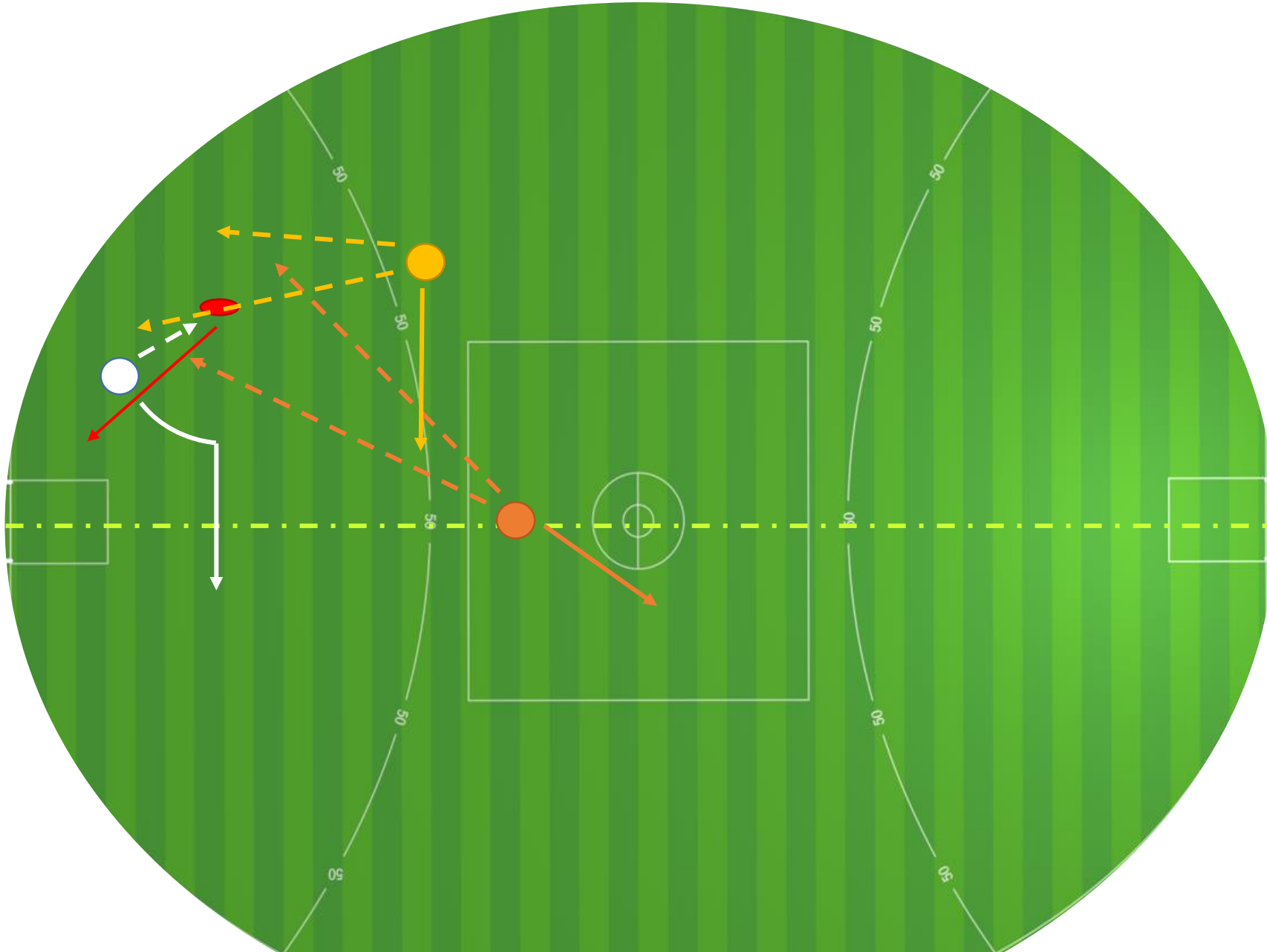
EZ Stoppage— ball stays inside 50

- MZ
- EZ
- FEZ
- Movement
- Vision



EZ Boundary Throw In – ball leaves 50

- MZ
- EZ
- FEZ
- Movement
- Vision



EZ Boundary Throw In – ball stays inside 50

Stoppage Positioning (cont)

Additional notes:

- If a stoppage is on centre wing, then the EZ umpire who was already on, or closest to the boundary side assumes the EZ position in a stoppage situation.
- Emphasis needs be achieving a different angle to your teammates, even if someone is in the wrong position:
 - The set-up is determined in order of Controlling umpire, NEZ, then FEZ.
 - If a teammate sets-up in a position that is not influential, first action is to try and help them re-position.
 - If teammate is not able to readjust, then set-up according to their position, forming the triangle.

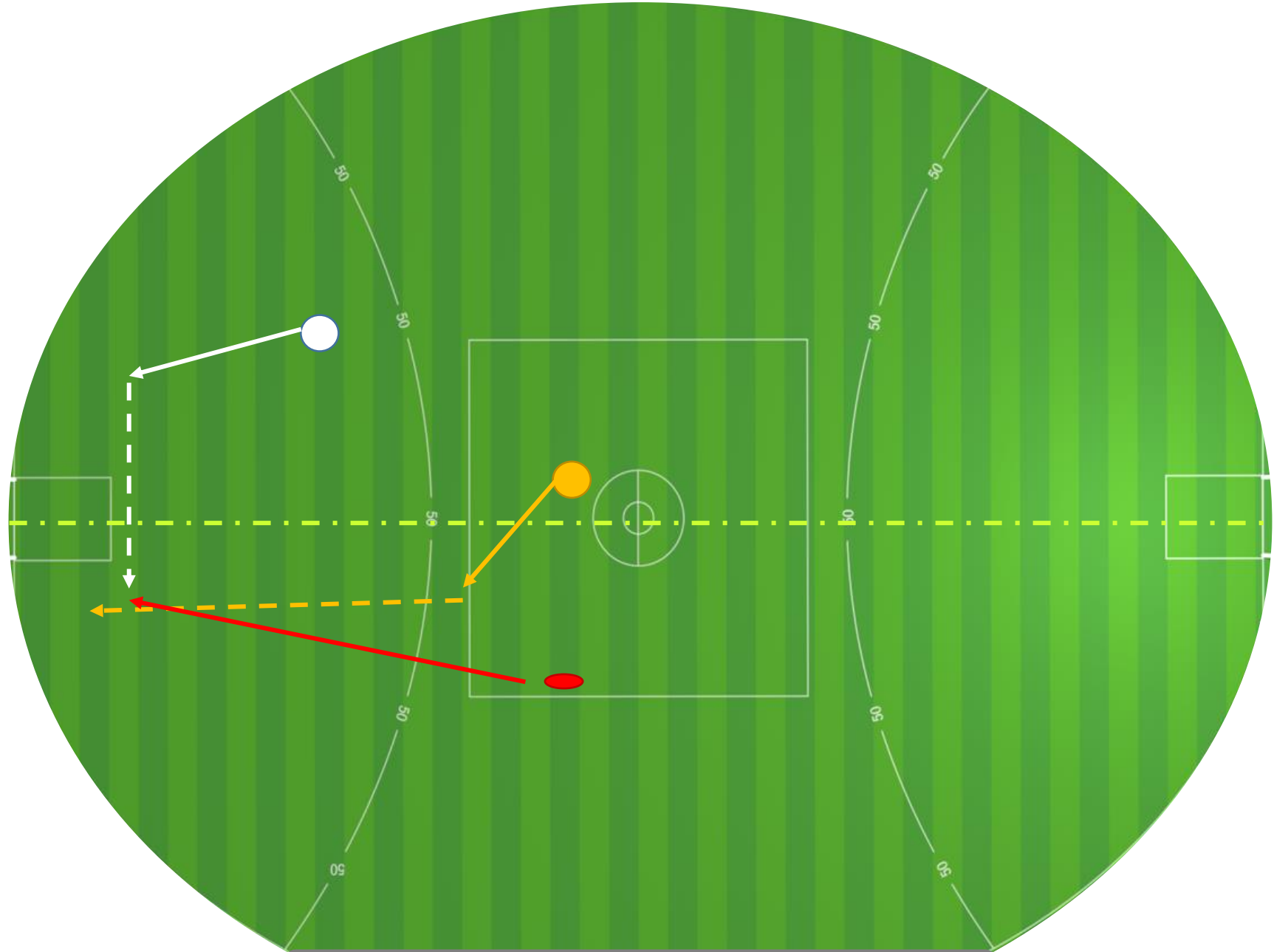
Running to Cover

Focus is teamwork when the play changes zones; MZ to EZ or vice-versa.

Adjusting to a new position of influence, creating a different angle.

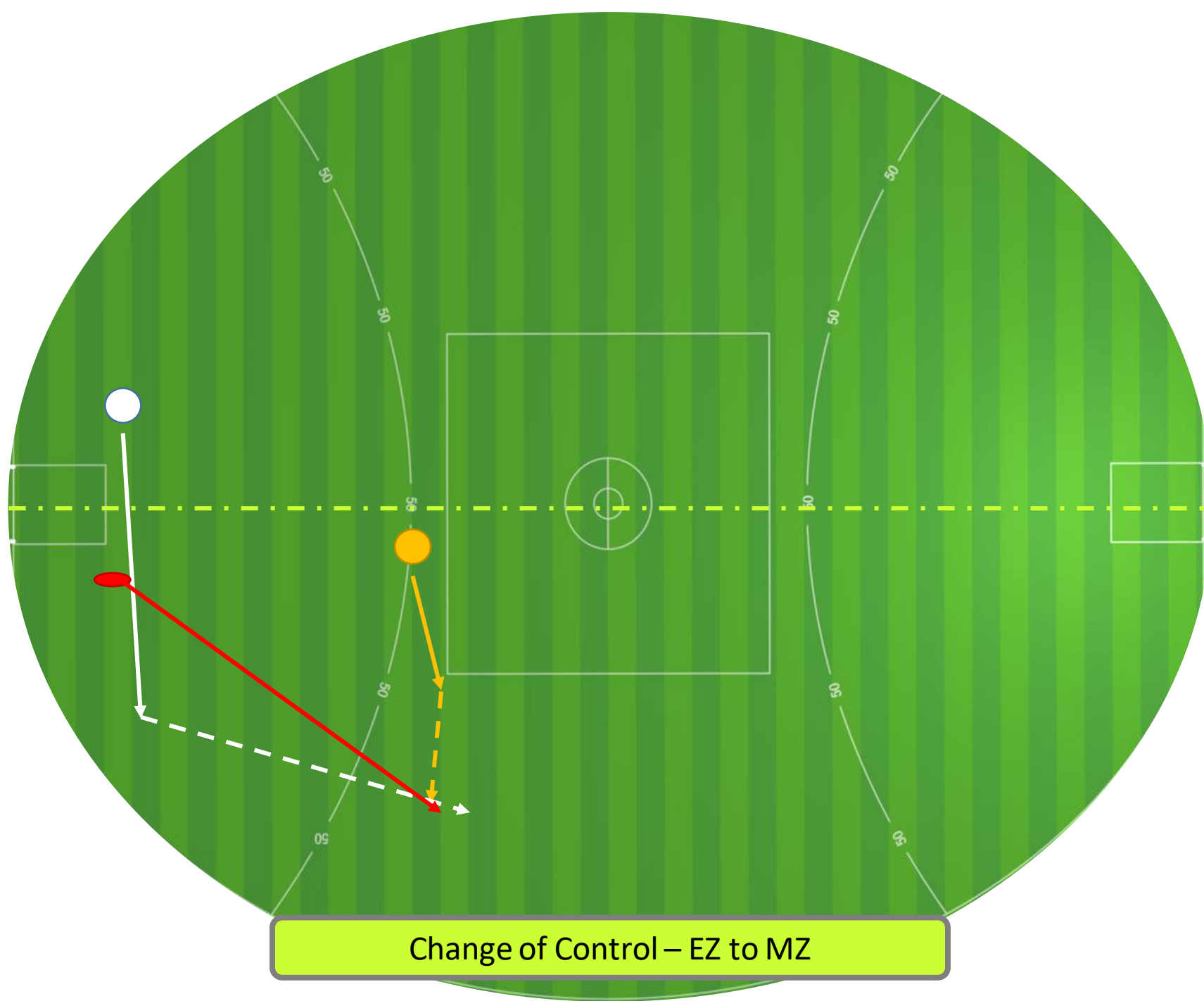
Assisting the new controlling umpire with possible contact that can't be seen from side-on.

● MZ
● EZ
● FEZ
— Movement
- - - Vision



Change of Control – MZ to EZ

● MZ
● EZ
● FEZ
— Movement
- - - Vision



Teamwork

Chop Outs every 1:30 to 2min

After a goal

FEZ and MZ at EZ stoppage

After a behind

MZ and NEZ at MZ stoppages/FK

Be Predictable

MZ keep play to 40-45m from goal

EZ hold play to 50

Protected Area assistance deep in 50

Defensive non-controlling assist at volatile situations

HAVE FUN TOGETHER!

Community Implications

Smaller grounds – less space – reduces effectiveness of 3 umpires

Number of umpires available to appoint 3 umpires

Budget constraints of appointments made across season

Others / Questions?